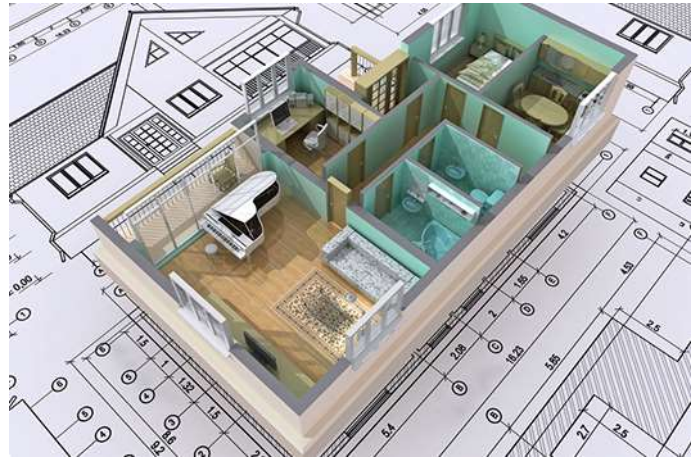


Cables 450/750 V

H07V-K



Description

These cables are indicated for executing permanent installations in housing, premises and offices, electrical control panels, as well as domestic and industrial lighting. They are easy to install thanks to their superslide insulation and great flexibility.
Reference Standards: UNE-EN 50525-2-31, EN 50525-2-31 and IEC 60227-3

Applications

- Suitable for the following installations:
- Earthing/Indoor or receiver installations
 - Indoor installations in housing
 - Indoor installations in housing
 - Premises that contain a bath or shower
 - Installations on premises with fire or explosion risk
 - Installations in premises with special characteristics
 - Electrical installations in caravans and in caravans parks

Dimensions

Section (mm ²)	Resistance at 20 °C (Ohm/km)	External Diameter (mm)	Weight (kg/km)	Class
1x1,5	13,3	2,90	19	Eca
1x2,5	7,98	3,55	30	Eca
1x4	4,95	4,05	44	Eca
1x6	3,3	4,60	62	Eca
1x10	1,91	5,90	105	Eca
1x16	1,21	6,95	157	Eca
1x25	0,78	8,55	235	Eca
1x35	0,554	9,80	319	Eca
1x50	0,386	11,70	458	Eca
1x70	0,272	13,50	645	Eca
1x95	0,206	16,45	877	Eca
1x120	0,161	17,80	1.111	Eca
1x150	0,129	19,60	1.366	Eca
1x185	0,106	22,30	1.701	Eca
1x240	0,0801	25,00	2.154	Eca

Technical Characteristics

1. Conductor	Flexible electrolytic copper conductor (Class V) according to BS EN 60228:2005 (previously BS6360) and EN 60228.
2. Insulation	PVC insulation, type TI-1, according to BS 7655 and HD 21.3S3:1995/A2:2008.
Nominal voltage	450/750 V
Test voltage	2.500 V A.C.
Maximum temperature	70 °C

Other characteristics

Colours according to UNE-EN 50525-1 and EN 50525-1
Non-flame propagating according to UNE-EN 60332-1-2, EN 60332-1-2 and IEC 60332-1-2
CPR Classification according to EN 50575

The information contained on this page is for information only and does not constitute a contractual commitment of any kind from Cables RCT. Cables RCT, as a consequence of his continuous improvement process, may modify any technical specification without further notice.



cablesrct.com

HEADQUARTER ZARAGOZA
T. 976 500 120
info@rct.es

DELEGATION BARCELONA
T. 93 307 95 62
barcelona@rct.es

DELEGATION MADRID
T. 91 691 85 48
madrid@rct.es

DELEGATION SEVILLA
T. 954 354 946
sevilla@rct.es

DELEGATION VALENCIA
T. 96 375 90 70
valencia@rct.es