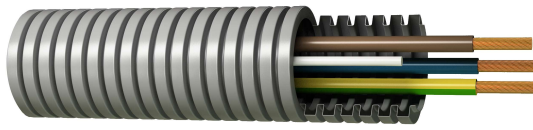


Cables Prewired cable

Prewired tube H07V-K



Description

These cable tubings are indicated for executing permanent installations in housing, premises and offices, electrical control panels, as well as domestic and industrial lighting. Electrical conductors of different colours and sections required to execute each installation are inserted onto the inside of a corrugated tube, thus achieving a product that provides the installer with an integral service that has numerous advantages and also saves time and costs.

Reference Standards: UNE-EN 50525-2-31, EN 50525-2-31 and IEC 60227-3

Applications

Suitable for the following installations:

- Outdoor lighting installations
- Earthing/Indoor or receiver installations
- Indoor installations in housing
- Indoor installations in housing
- Premises that contain a bath or shower
- Installations in premises with fire or explosion risk
- Installations in premises with special characteristics
- Electrical installations in caravans and in caravans parks

Technical Characteristics

1. Conductor	Flexible electrolytic copper conductor (Class V) according to BS EN 60228:2005 (previously BS6360) and UNE 60228.
2. Insulation	PVC insulation, type TI-1, according to UNE 21031-3 and HD 21.3S3: 1995/12:2008.
3. Tube	Fireproof polypropylene corrugated tube with low halogen content, low fumes emissions and non-flame propagating. Resistant to acids, bases and organic solvents and excellent compression properties (750N)
Nominal voltage	450/750 V
Test voltage	2.500 V A.C.
Maximum temperature	70 °C

Other characteristics

Colours according to UNE-EN 50525-1 and EN 50525-1

Non-flame propagating according to UNE-EN 60332-1-2, EN 60332-1-2 and IEC 60332-1-2

CPR classified according to EN 50575

Dimensions

Section (mm ²)	Resistance at 20 °C (Ohm/km)	External Diameter (mm)	Weight (kg/km)	Class
1x1,5	13,3	16,00	69	Eca
1x2,5	7,98	16,00	79	Eca
2x1,5	13,3	16,00	88	Eca
2x2,5	7,98	16,00	108	Eca
3G1,5	13,3	20,00	124	Eca
3G2,5	7,98	20,00	155	Eca
3G4	4,95	20,00	196	Eca
3G6	3,3	25,00	294	Eca
4x1,5	13,3	20,00	144	Eca
4x2,5	7,98	20,00	186	Eca
5x1,5	13,3	20,00	163	Eca
5x2,5	7,98	20,00	215	Eca
5x6	3,3	25,00	415	Eca
2x1,5 + 3x2,5	12,1	20,00	195	Eca
6x1,5	13,3	20,00	182	Eca
6x2,5	7,98	25,00	287	Eca
3x1,5 + 3x2,5	12,1	25,00	235	Eca
3x2,5 + 3x6	7,41	25,00	362	Eca
7x1,5	13,3	22,50	211	Eca
7x2,5	7,98	25,00	317	Eca
4x1,5 + 3x2,5	12,1	25,00	254	Eca
8x1,5	13,3	20,00	219	Eca
5x1,5 + 3x2,5	13,3	25,00	271	Eca
5x1,5 + 3x4	12,1	25,00	313	Eca