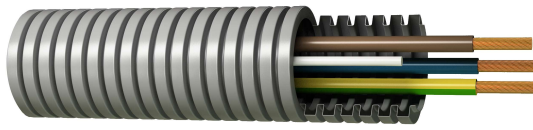


Cables Prewired cable

## Prewired tube H07V-U



### Description

These cable tubings are indicated for executing permanent installations in housing, premises and offices, electrical control panels, as well as domestic and industrial lighting. Electrical conductors of different colours and sections required to execute each installation are inserted onto the inside of a corrugated tube, thus achieving a product that provides the installer with an integral service that has numerous advantages and also saves time and costs

Reference Standards: UNE-EN 50525-2-31, EN 50525-2-31 and IEC 60227-3

### Applications

Suitable for the following installations:

- Outdoor lighting installations
- Earthing/Indoor or receiver installations
- Indoor installations in housing
- Indoor installations in housing
- Premises that contain a bath or shower
- Installations on premises with fire or explosion risk
- Installations in premises with special characteristics
- Electrical installations in caravans and in caravans parks

### Technical Characteristics

1. Conductor	Electrolytic copper conductor, Class I, according to BS EN 60228:2005 (previously BS6360) and UNE 60228.
2. Insulation	PVC insulation, type TI-1, according to BS 21031-3 and HD 21.3S3: 1995/12:2008.
3. Tube	Fireproof polypropylene corrugated tube with low halogen content, low fumes emission and non-flame propagating. Resistant to acids, bases and organic solvents and excellent compression properties (750 N)
Test voltage	2.500 V A.C.
Nominal voltage	450/750V
Maximum temperature	70 °C

#### Other characteristics

Colours according to UNE-EN 50525-1 and EN 50525-1

Non-flame propagating according to UNE-EN 60332-1-2, EN 60332-1-2 and IEC 60332-1-2

PVC insulation with reduced hydrogen chloride (HCL) emission

**Dimensions**

Section (mm <sup>2</sup> )	Resistance at 20 °C (Ohm/km)	External Diameter (mm)	Weight (kg/km)	Class
2x1,5	12,1	20,00	105	Eca
2x2,5	7,41	20,00	126	Eca
3G1,5	12,1	20,00	123	Eca
3G2,5	7,41	20,00	155	Eca
3G4	4,61	20,00	270	Eca
3G6	3,08	25,00	281	Eca
4x1,5	12,1	20,00	142	Eca
4x2,5	7,41	20,00	184	Eca
4x4	4,61	25,00	268	Eca
4x6	3,08	25,00	344	Eca
5x1,5	12,1	20,00	160	Eca
5x2,5	7,41	20,00	214	Eca
5x4	4,61	25,00	313	Eca
5x6	3,08	25,00	408	Eca
2x1,5 + 3x2,5	12,1	20,00	262	Eca
6x2,5	7,41	25,00	287	Eca
3x2,5 + 3x6	3,08	25,00	368	Eca
7x1,5	12,1	25,00	130	Eca
7x2,5	7,41	25,00	317	Eca
5x1,5 + 2x2,5	12,1	25,00	242	Eca
4x1,5 + 3x2,5	12,1	25,00	253	Eca