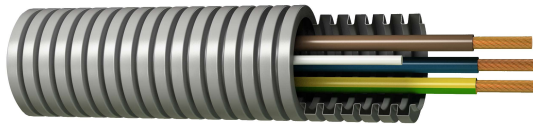


Cables Prewired cable

## Prewired tube H07Z1-K Type 2 (AS) CPR



### Description

The H07Z1-K Type 2 (AS) CPR cables comply with the construction product classification criteria according to the EU CPR Regulation 305/2011 and EN 50575, being those indicated for fixed installations where low fumes and corrosive gas emission is required in the event of fire, such as public premises, hospitals, schools, shopping centres and airports. Electrical conductors of different colours and sections required to execute each installation are inserted onto the inside of a corrugated tube, thus achieving a product that provides the installer with an integral service that has numerous advantages and also saves time and costs. Reference Standards: UNE-EN 50525-3-31, EN 50525-3-31 and UNE 211002

### Applications

Suitable for the following installations:

- Individual by-pass indoor or receiver installations
- Public premises installations in premises with fire or explosion risk
- Appropriate for installations where increased fire protection is required

### Technical Characteristics

1. Conductor	Flexible electrolytic copper conductor (Class V) according to BS EN 60228:2005 (previously BS6360) and UNE 60228.
2. Insulation	Thermoplastic polyolefin insulation, type TI-7, according to UNE 211002 and HD 21.15S1:2006. With special properties against flame propagation, fire, opacity of fumes and corrosiveness of gases.
3. Tube	Tube, Corrugated fireproof polypropylene tube, with low halogen content, low fumes emission and non-flame propagating. Resistant to acids, bases and organic solvents and excellent compression properties (750N).
Nominal voltage	450/750 V
Test voltage	2.500 V A.C.
Maximum temperature	70 °C

#### Other characteristics

Colours according to UNE-EN 50525-1, EN 50525-1

Non-flame propagating according to UNE-EN 60332, EN 60332, IEC 60332

Non-fire propagating according to EN 50399

Low halogen content according to UNE-EN 21031-15 Appendix A and HD 21.15S1:2006

Low corrosive gas emission according to UNE 21031 Appendix A0, HD 21.15S1:2006

Low opaque smoke emission according to UNE-EN 61034, EN 61034, IEC 61034

**Dimensions**

Section (mm <sup>2</sup> )	Resistance at 20 °C (Ohm/km)	External Diameter (mm)	Weight (kg/km)	Class
2x1,5	13,3	20,00	105	Cca- s1b, d1, a1
2x2,5	7,98	20,00	127	Cca- s1b, d1, a1
3x1,5	13,3	20,00	123	Cca- s1b, d1, a1
3G1,5	13,3	20,00	123	Cca- s1b, d1, a1
3x2,5	7,98	20,00	156	Cca- s1b, d1, a1
3x6	3,3	25,00	295	Cca- s1b, d1, a1
4x1,5	13,3	20,00	142	Cca- s1b, d1, a1
4x2,5	7,98	20,00	186	Cca- s1b, d1, a1
5x1,5	13,3	20,00	160	Cca- s1b, d1, a1
5x2,5	7,98	20,00	215	Cca- s1b, d1, a1
52x1,5	13,3	16,00	85	Cca- s1b, d1, a1
53x1,5	13,3	16,00	103	Cca- s1b, d1, a1